

## Compatibility View Mode

Method 1: Click the Compatibility View button on the Address bar

1. When Internet Explorer recognizes that a webpage is not compatible, you will see the **Compatibility View** button on the **Address bar**. **Try clicking it.**



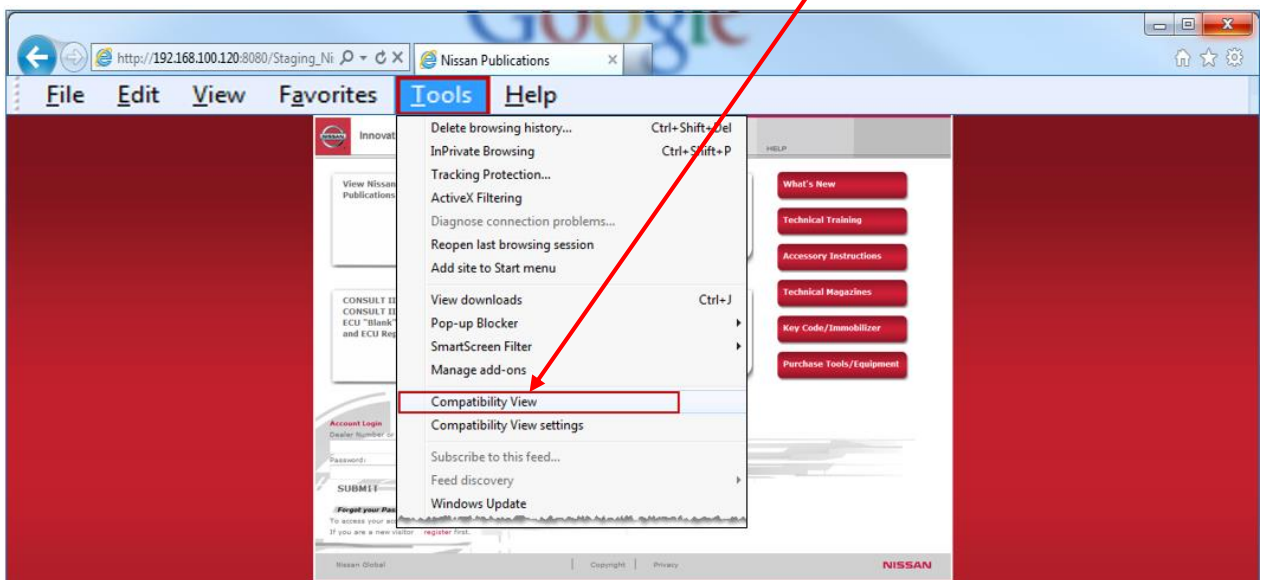
2. When Compatibility View is turned on, the button changes from an outline to a **solid color** when you view the page.



Method 2: Set and use Compatibility View on the Menu bar

1. **To use Compatibility View:**

- a. Open the webpage in Internet Explorer, and then click **Compatibility View** on the Tools menu. If you do not see the Tools menu, press **ALT**

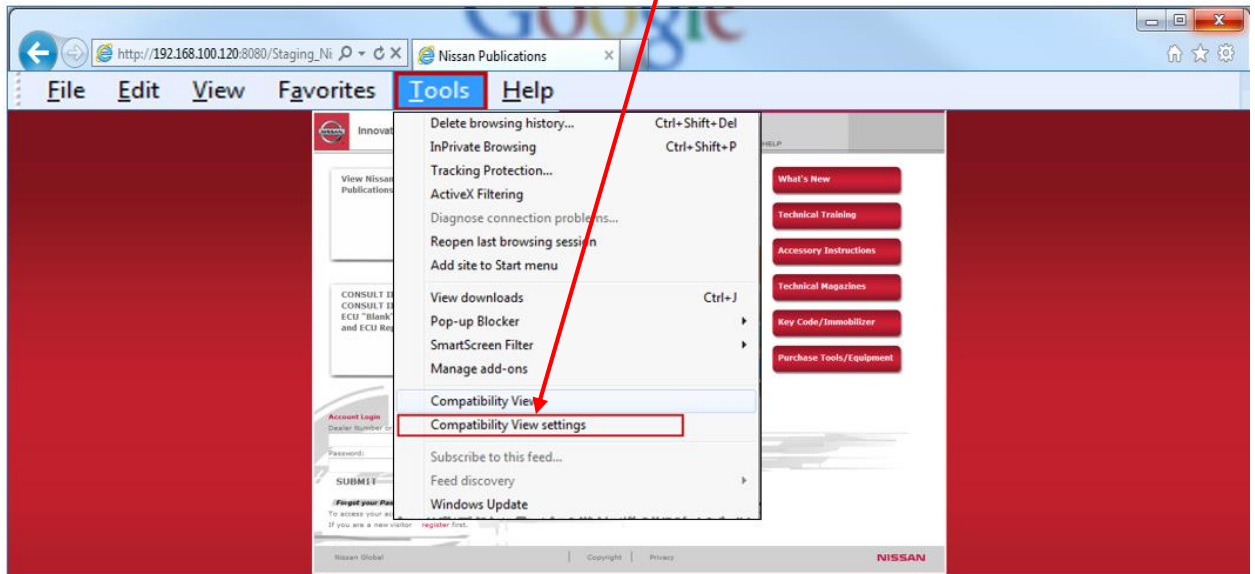


- b. When Compatibility View is turned on, the button changes from an outline to a solid color when you view the page.



## 2. To set Compatibility View:

- a. In internet Explorer, click **Compatibility View settings** on the Tools menu. If you do not see the **Tools** menu, press ALT on your **Keyboard**.



- b. In the **Compatibility View Settings** windows, type the address of the webpage, and then click **Add**.

