

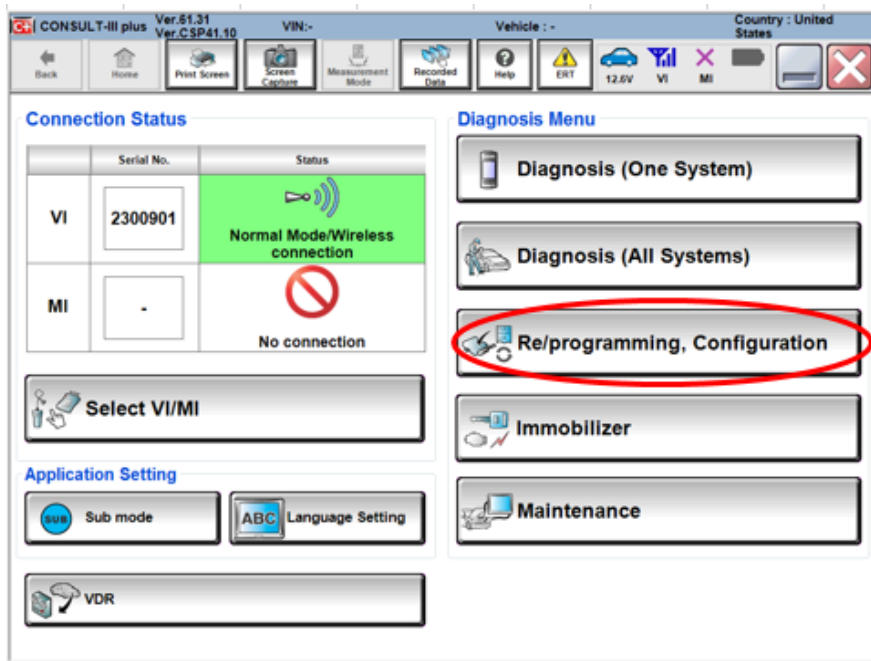
The Infiniti QX30 vehicle uses a high level of security when Re/programming or Configuration is performed to the vehicle ECUs. Due to this design, the following instructions must be used to access the Re/programming and Configuration function of C-III plus software.

Requirements:

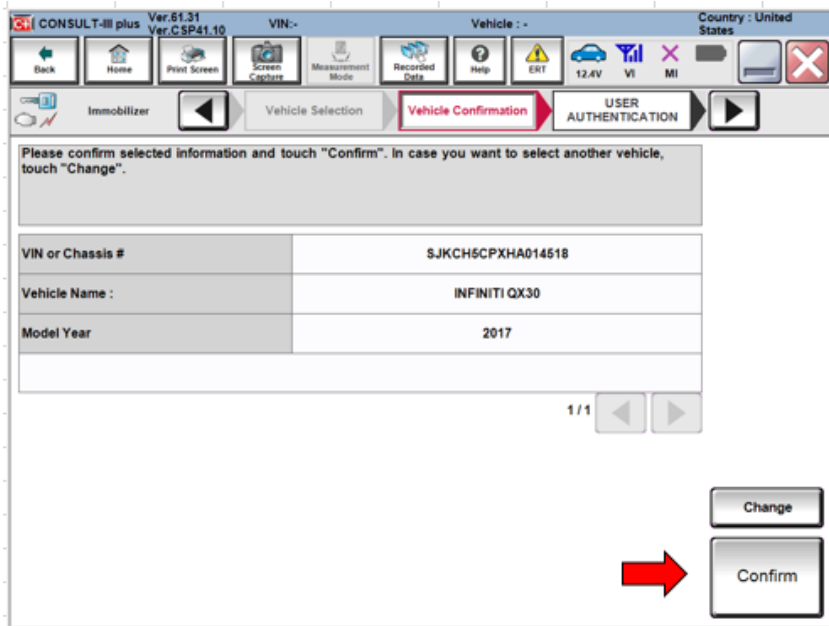
- Registered user on Nissan-techinfo.com or Infiniti-techinfo.com
- CONSULT Panasonic Toughbook PC
- Active C-III plus software Annual Subscription

Instructions:

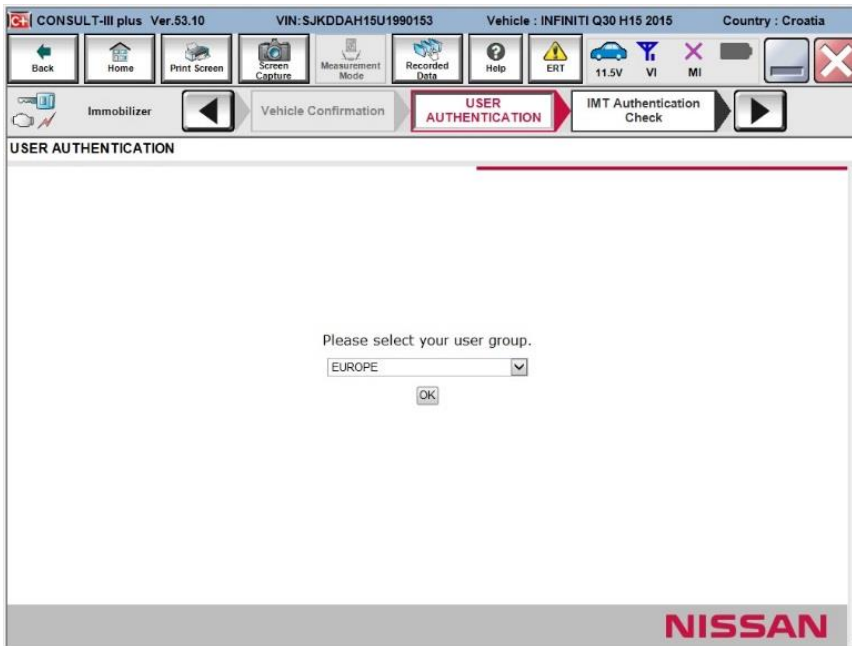
1. Connect CONSULT PC to QX30 vehicle.
2. Select Re/programming, Configuration



3. Once VIN is verified, select Confirm



4. QX30 Network Authentication Screen. Please select USA/CANADA Aftermarket



Please select your user group.



5. Login screen will appear. Enter your Nissan or Infiniti Techinfo website user ID & password.



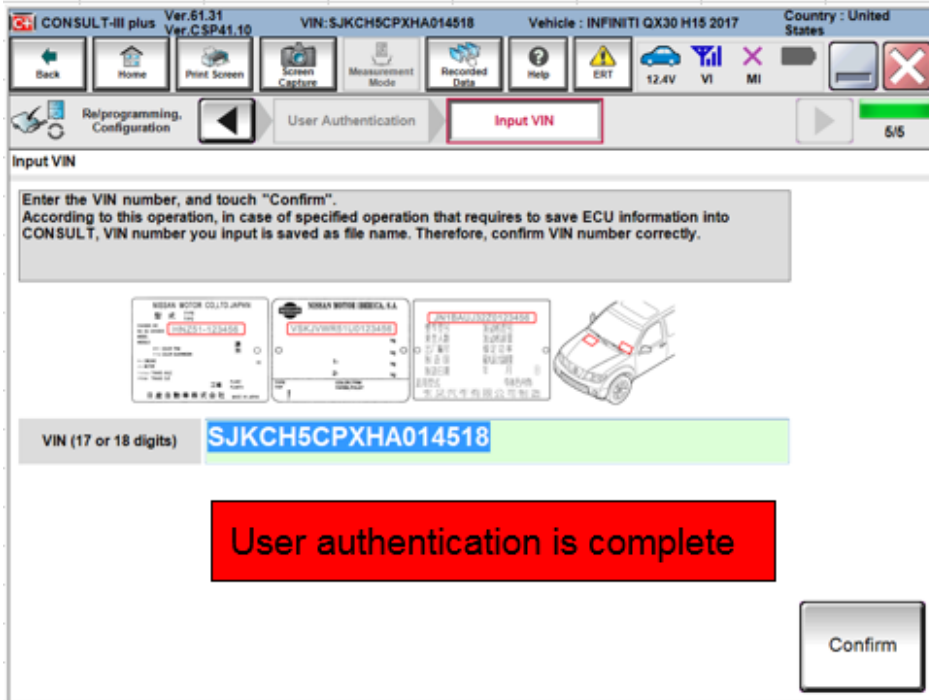
Account Login

TechInfo User ID:

TechInfo Password:



6. User authentication is complete, please proceed with your repair.







CONSULT-III plus Ver.61.31 Ver.CSP41.10 VIN: SJKCH5CPXHA014518 Vehicle: INFINITI QX30 H15 2017 Country: United States

Back Home Print Screen Screen Capture Measurement Mode Recorded Data Help ERT 12.4V VI MI

Relprogramming, Configuration User Authentication **Input VIN** 6/5

Input VIN

Enter the VIN number, and touch "Confirm".
According to this operation, in case of specified operation that requires to save ECU information into CONSULT, VIN number you input is saved as file name. Therefore, confirm VIN number correctly.

			
---	---	---	---

VIN (17 or 18 digits) **SJKCH5CPXHA014518**

User authentication is complete